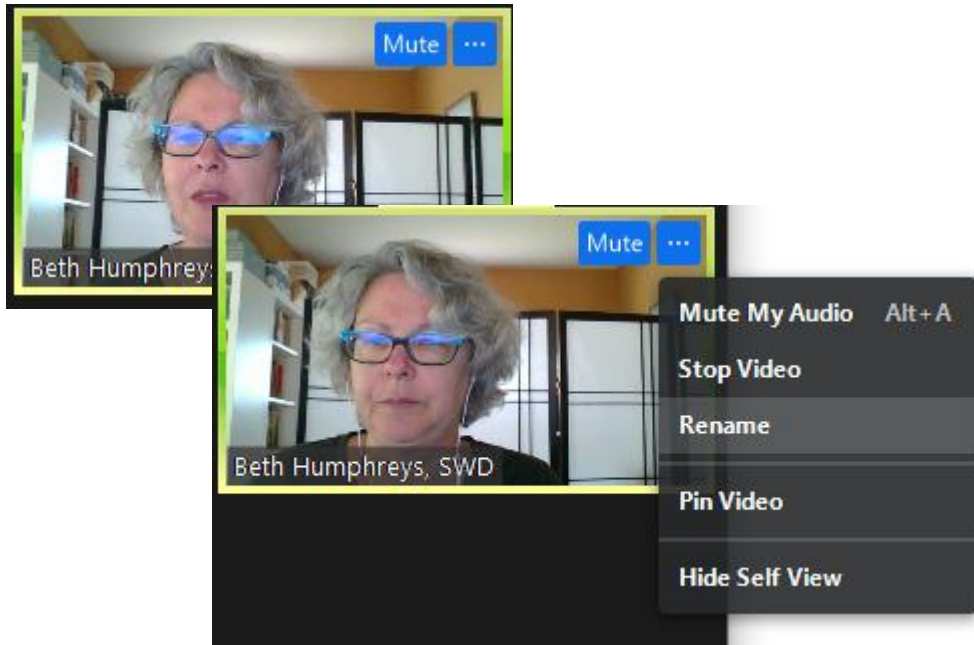


Welcome!

Please update your name on-screen

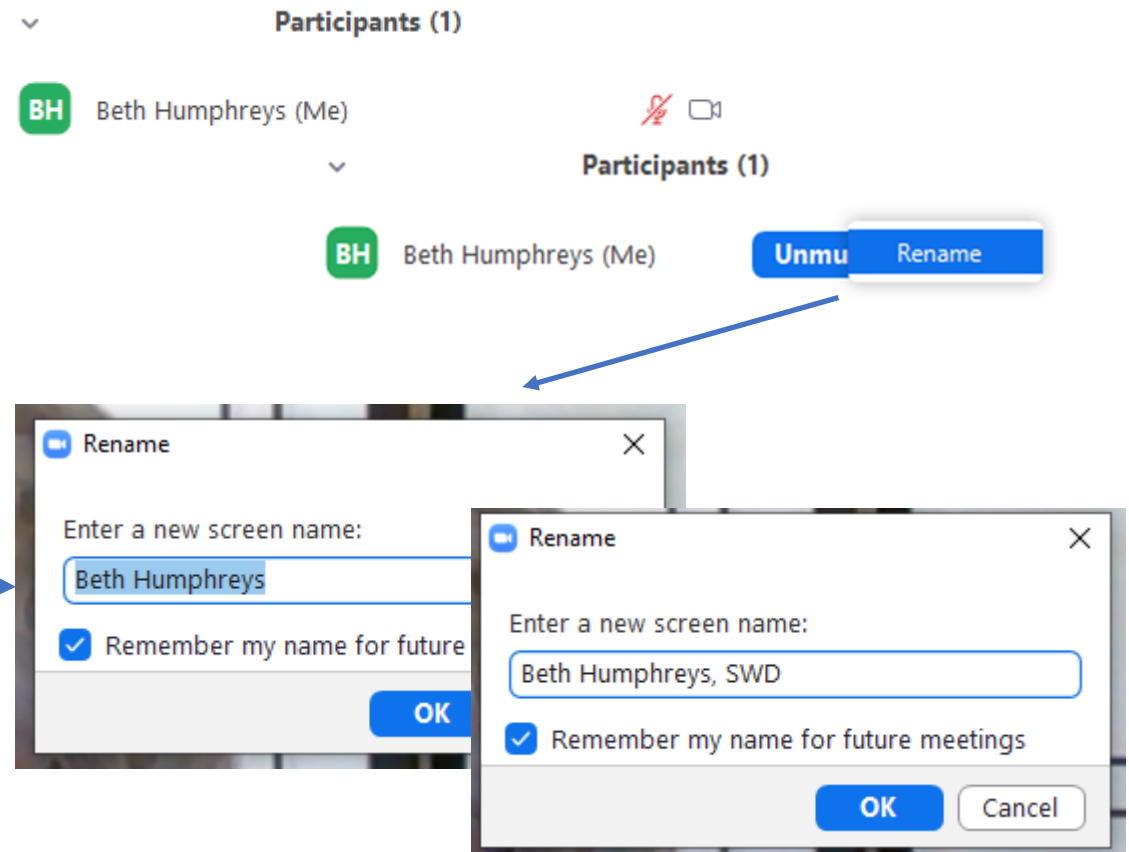
From your onscreen image

- Hover your mouse in the upper righthand corner of your image
- Click on the three dots
- Scroll down and click on Rename
- Fill in your name and affiliation
- Click OK



From the Participants list, find your name

- Hover your mouse on the righthand side
- Click on Rename
- Fill in your name and affiliation
- Click OK



Metropolitan Solid Waste Advisory Committee

February 11, 2026



1. Call to Order and Introductions

Vice Chair Gire

Agenda

Metropolitan Solid Waste Advisory Committee (MSWAC)

Wednesday, February 11, 2026 | 10 a.m. - noon

Online ([public Zoom link](#))

In-person at King Street Center (201 S Jackson St, Seattle, WA 98104)

Please contact Ali Blum in advance of the meeting at ablum@kingcounty.gov or 206-263-6995 for in-person attendance.

TIME	TOPIC	PRESENTER
10:00	1. Call to Order and Introductions	Vice Chair Gire
10:05	2. Review Agenda	Vice Chair Gire
10:10	3. Review/Approve January Joint MSWAC/SWAC Minutes	Vice Chair Gire
10:15	4. Public Comment	
10:20	5. Updates: SWD, SWAC, Other	Rebecca Singer Vice Chair Gire
10:30	6. Operations Update	Mark Monteiro
10:40	7. 2026 MSWAC Work Plan Approval	Ali Blum
10:45	8. MSWAC Chair and Vice Chair Elections	Ali Blum MSWAC Chair
10:50	9. 2027 Rate Early Look and Context Setting	Dave Pierce Alex Chew
11:10	10. Comprehensive Solid Waste Management Plan Update	Patty Liu
11:25	11. 2026 State Legislation Update	Amy Ockerlander
11:40	12. Hazardous Waste Management Program Update	Matthew Weintraub Kendrick Stewart Frances Bothfeld
11:55	13. Member Comment	MSWAC Chair
12:00	14. Adjourn	MSWAC Chair

Next meeting: Wednesday, March 11, 2026

This notice will be provided in alternate formats upon request.

Accommodations for people with disabilities will be provided when requested one week in advance of the meeting. Please call 206-477-5212; TTY Relay 711

2. Review Agenda Vice Chair Gire

3. Review/Approve January Joint MSWAC/SWAC Minutes

Vice Chair Gire

4. Public Comment

5. Updates: SWD, SWAC, Other

Rebecca Singer

Vice Chair Gire



King County

Department of Natural Resources and Parks
Solid Waste Division

6. Operations Update

Mark Monteiro

7. 2026 MSWAC Work Plan Approval

Ali Blum

8. MSWAC Chair and Vice Chair Elections

Ali Blum

MSWAC Chair

9. 2027 Rate Early Look and Context Setting

Dave Pierce

Alex Chew



King County

Department of Natural Resources and Parks
Solid Waste Division

2027 Rate Proposal-Early Look

David Pierce – SW Enterprise Services - Section Manager

Alex Chew – SW Enterprise Services - Rates & Budget Team Supervisor



King County

Department of
Natural Resources and Parks
Solid Waste Division

Agenda for Today

- Overview/Refresher on Rate Model
- Review 2027 Rate Development Timeline
- Rate Drivers
- Rate Growth-Push and Pull
- Early look at 2027 Rate
- Question and Discussion

Rate Model-Methodology and Inputs

Methodology

Calculate Revenue Requirement

- Forecast operating and capital expenditures and reserves
- Subtract forecasted non-fee revenues

Allocate Revenue Requirement to Customer Classes

- Calculate customer utilization of services based on the previous year's tonnage and transactions.
- Proportionally allocate revenue requirement to each customer class based on utilization.

Estimate Future Tonnage

- Forecast future tonnage that will enter the system based on economic and policy conditions.
- Estimate the amount of tonnage each customer class will bring into the system

Set Rates such that:

- The revenue requirement allocated to each customer class is equal to the rate* the estimated future tonnage for each customer class.

Inputs

Expenditure and Revenue Forecasts

- Operating expenditures and revenues adjusted for inflation and new adds
- Capital forecast
- Equipment forecast
- Debt forecast

Allocation Analyses

- Customer class splits
- Functional allocation analysis

Tonnage Analyses

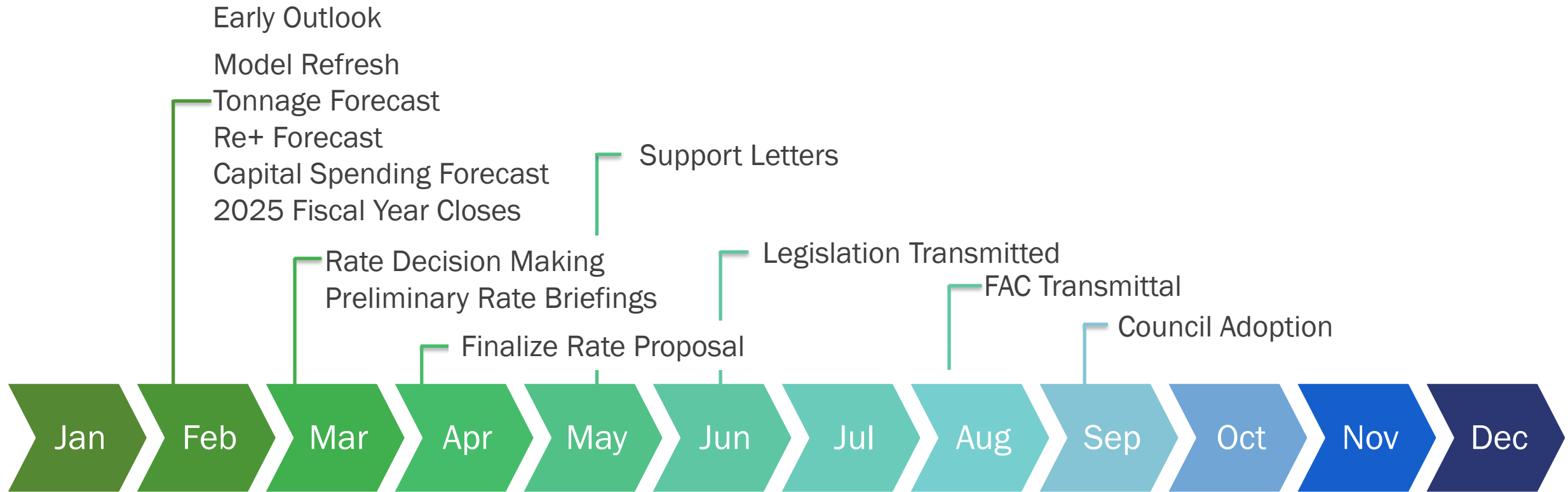
- Tonnage Forecast (based on economic conditions)
- Re+ forecast (Adjusted tonnage forecast to incorporate policy conditions)

Definitions

Revenue Requirement=Amount that tipping fees must recoup to sustain operations and maintain appropriate reserves

Customer Class=Solid waste customers that have similar service needs and pay the same fee (e.g. commercial haulers)

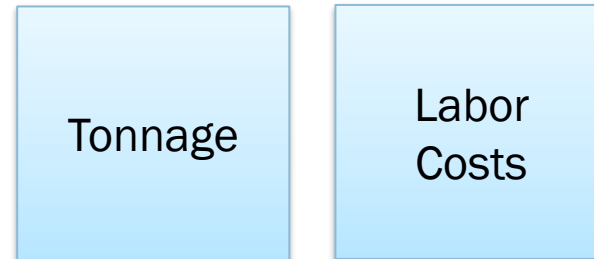
Timeline for 2027 Rate Development



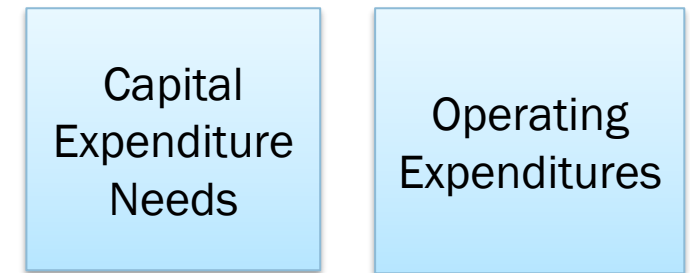
Rate Drivers



Mostly out of our control



Limited control



Somewhat in our control

Rate Growth-Push and Pull

Actions we are taking to control rate growth:

- Reprioritizing and re-assessing capital needs; delaying costs where possible to keep near term rates lower (Decision to push out Permanent Facilities already made, other decisions pending)
- Limiting operational adds (Our goal for 26-27 is live within our existing appropriation, decisions for outyears pending)
- Exploring operational options to control costs (e.g. evaluating vacated positions for potential repurposing to fit business need)
- Opening up new revenue streams (CHARGE, estimated ~\$6million in net revenue for 2027).

Risks we face that could lead to rate growth:

- Inflation spike
- Policy actions that reduce tonnage coming into our system (e.g. state Organics laws passed in the last two years HB 1799, HB 2301)
- New regulatory requirements
- Need to maintain/replace aging infrastructure

Early Look at 2027 Rate (tentative)

The chart below shows the Adopted 2026 Rate, the prior 2027 Projected Rates, and the Preliminary 2027 Rates. Division staff are actively working on strategies to minimize rate increases, while ensuring that critical infrastructure and reserves are supported.

Fee Revenue	UOM Type	2026 Rate Adopted	2027 Prior Model	% Increase	2027 Preliminary Rate	% Increase
Commercial FAC	Per Ton	\$ 179.18	\$ 194.00	8.27%	\$ 192.00	7.15%
Self-Haul p	Per Ton	\$ 229.08	\$ 258.00	12.62%	\$ 245.00	6.95%
Regional Direct	Per Ton	\$ 194.89	\$ 219.30	12.52%	\$ 209.00	7.24%
Yard Waste	Per Ton	\$ 129.38	\$ 129.38	0.00%	\$ 138.00	6.66%
Special Waste	Per Ton	\$ 275.14	\$ 310.00	12.67%	\$ 294.00	6.85%
Cedar Hills Other excludes Reg. Direct	Per Ton	\$ 179.18	\$ 194.00	8.27%	\$ 192.00	7.15%
Minimum (self-haul)	Transaction	\$ 36.62	\$ 41.28	12.73%	\$ 39.00	6.50%
Appliances	Transaction	\$ 30.00	\$ 30.00	0.00%	\$ 32.00	6.67%
Mattresses	Transaction	\$ 30.00	\$ 30.00	0.00%	\$ 32.00	6.67%
Cleanup Lift	Transaction	\$ 20.00	\$ 20.00	0.00%	\$ 20.00	0.00%
Fixed Annual Charge - Calculated		\$ 26,838,510	\$ 30,864,287	15.00%	\$ 28,717,206	7.00%

Assumptions:

- Fee increase applied equally to customer classes
- Capital expenditures reductions by delaying work on Permanent Facilities
- No adds to operating budget in 2027 beyond inflation.

Rate Development Next Steps

Timing	Process Milestone
Today	Early Rate Outlook (MSWAC/SWAC)
By 2/27/26	Rate Model and Forecast Development Complete
By 3/31/26	Rate Decision Making Complete
By 3/31/26	Preliminary Rate Briefings Complete
By 4/30/26	Final Rate Agency Proposal Complete
By 5/13/26	Draft Support Letter Shared at SWAC/MSWAC meetings (5/8 and 5/13)
By 6/20/26	Final Support Letter Approved at SWAC/MSWAC meetings (6/10 and 6/20)
By 6/30/26	Executive Proposed Legislation transmitted; Council deliberations begin
By 8/31/26	Fixed Annual Cost Allocation Transmittal Complete
By 9/30/26	Council Rate Adoption

Questions/Discussion

10. Comprehensive Solid Waste Management Plan Update

Patty Liu

Comp Plan Update MSWAC/SWAC - Feb 2026

 **King County**
Department of Natural Resources and Parks

Solid Waste Division

waste prevention | resource recovery | waste disposal

Rail Impacts

Additional analysis we are conducting

- Both Waste Export by Rail and Mass Burn will create additional rail traffic from either MSW or ash export
- The Long-Term Disposal Study acknowledged more rail analysis would be beneficial
- SWD has heard requests for more information on rail impacts from:
 - Partner Cities
 - Sound Cities Association Public Issues Committee
 - Regional Policy Council
- SWD is working with a consultant to conduct a study that addresses partner needs

Timeline

(Subject to change)

Traffic impact study will add 2-3 months here.



2026

2027

2028

2029

2030

Draft SEIS
Comment
Period

Final SEIS
Complete

Seek Advisory
Committee
Recommendations on
Long-Term Disposal

Submit
Comp Plan
to Exec

60 Day
Public, 120
Day Ecology
Review
Begins

Exec
Approval,
Transmit
to Council

Council
Approval

120 Day
City
Approval
Begins

120 Day
Ecology
Approval
Begins

Comp
Plan
Adopted

Rail Traffic Study

Supplemental Environmental Impact Statement

- Proposed study will analyze the impact of new marginal train traffic for both waste export and mass burn plus ash export:
 - Create a rail crossing inventory and map
 - Group crossings into three tiers based on potential impacts
 - Assess frequency, duration, and time of day for train blockages
 - General vehicle queuing impacts at highest volume crossings
- Is anything critical missing from the outputs?

A woman in a green shirt is shaking hands with a man in a grey suit. They are both smiling and looking towards the right. The background is a bright, modern office space with large windows.

Engagement

We really want to hear from you

- SWD will reach out to most impacted cities to discuss this scope
- Others can feel free to reach out to:
- Amy Ockerlander
aockerlander@kingcounty.gov
(206) 263-6701
- Ali Blum
ABlum@kingcounty.gov
(206) 263-6995

THANK YOU



11. 2026 State Legislation Update

Amy Ockerlander



2026 Legislative Update

2026 Session Cutoff Calendar

	Date	Day of Week	Day of Session			
January	12	M	1	← First day of session.		
	13	T	2			
	14	W	3			
	15	Th	4			
	16	F	5			
	17	S	6			
	18	Su	7			
	19	M	8			
	20	T	9			
	21	W	10			
	22	Th	11			
	23	F	12			
	24	S	13			
	25	Su	14			
	26	M	15			
	27	T	16			
	28	W	17			
	29	Th	18			
	30	F	19			
	31	S	20			
	February	1	Su		21	← Policy Committee Cutoff. Last day to read in committee reports in house of origin, except House fiscal committees and Senate Ways & Means and Transportation committees.
		2	M		22	
		3	T		23	
		4	W		24	
		5	Th		25	
		6	F		26	
		7	S		27	
		8	Su		28	
		9	M		29	
		10	T		30	
		11	W		31	
12		Th	32			
13		F	33			
14		S	34			
15		Su	35			
16		M	36			
17		T	37			
18		W	38			
19		Th	39			
20		F	40			
21		S	41			
22		Su	42			
23		M	43			
24		T	44			
25		W	45			
26		Th	46			
27		F	47			
28		S	48			
March	1	Su	49	← Fiscal Committee Cutoff - Opposite House. Last day to read in opposite house committee reports from House fiscal committees and Senate Ways & Means and Transportation committees.		
	2	M	50			
	3	T	51			
	4	W	52			
	5	Th	53			
	6	F	54			
	7	S	55			
	8	Su	56			
	9	M	57			
	10	T	58			
	11	W	59			
	12	Th	60			
				← Opposite House Cutoff. Until 5 p.m., last day to consider opposite house bills with the exception of budgets, matters necessary to implement budgets, matters that affect state revenue, initiatives to the legislature and alternatives, differences between the two houses, and business related to the interim or closing the session.		
				← Sine Die. Last day allowed for regular session under state constitution.		



2026 Legislative Session

Short Session (60 days)

2026 Legislative Session

Short Session (60 days)

We're off and running!

- House of Origin Policy: **February 4 PASSED**
- House of Origin Fiscal Policy: **February 9 PASSED**
- House of Origin: **February 17**
- Opposite House Policy: **February 25**
- Opposite House Fiscal: **March 2**
- Opposite House: **March 6**
- Sine Die: **March 12**

Solid waste bills in process 2026

- Extended Producer Responsibility (EPR) for Textiles (*building on HB 1420*)
- Improving the End-of-Life Management of Electric Vehicle Batteries (*building on HB 1550 / SB 5586*)
- Increasing Solid Waste Collection Tax (*building on HB 2018*)
- Deposit-Return System (DRS) for Beverage Containers (*HB 1607*)
- Extended Producer Responsibility (EPR) for Mattresses (*building on HB 1901*)
- Extended Producer Responsibility (EPR) for Sharps (*building on Safe Sharps Advisory Group*)
- Amending the Single-Use Plastic Bag Ban (*HB 2233*)
- Post Consumer Recycled Content Requirements (*HB 2271*)
- **NEW:** Providing Local Governments Tax Resources and Fund Flexibility (*HB 2442/SB6294*)
- **NEW:** Concerning Naturally Occurring Fibrous Silicate Materials (*HB2605/SB6213*)

Questions?



12. Hazardous Waste Management Program Update

Matthew Weintraub

Kendrick Stewart

Frances Bothfeld



Hazardous Waste Management Program

Program Update

Matthew Weintraub, Government Relations Manager

February 11, 2026



Program Overview

Mission

Protect public health and environment from risks posed by hazardous materials.



Service Area

2.3 million residents and more than 70,000 businesses across King County, and unincorporated areas.



Authorized By

County: King County Board of Health

State: WA State Dept. of Ecology



Unified Program

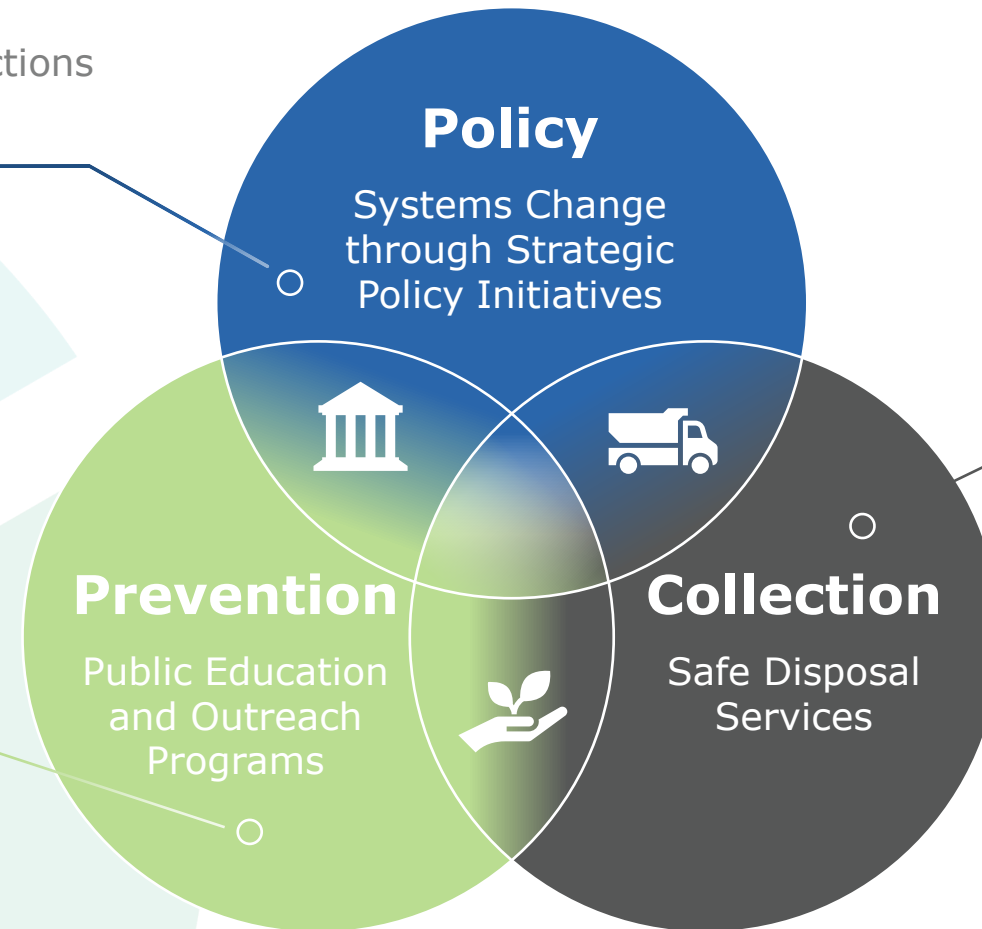
Managed by a Multi-Jurisdictional Coordinating Committee.



Program Services

- EPR for all HHW
- Lead exposure reduction
- PFAS and chemical restrictions
- Exposure research

- Awareness and education
- Best practices training
- Customer support centers
- Small business assistance (Tech support & vouchers)



- Year-round collection facilities
- Mobile collection across King County including unincorporated
- City and Tribe Sponsored collection and education events

Local Services and Partnerships

- **Community education and direct services**

- Direct education and information sharing in coordination with cities, chambers of commerce and CBO's
- Wastemobile
- Partner with residents to support families with children who have elevated blood lead levels.

- **Services and resources for businesses**

- Spill Management and Prevention
- Voucher Incentive Programs
- Technical assistance to small quantity generating businesses.



Local Services and Partnerships

- **Support compliance with state for hazardous waste management**
 - Build awareness of hazardous materials and safer alternatives.
 - Partner and collaborate with customers, communities and businesses
 - Engage and communicate with customers.
- **Community support and engagement embedded across all Program LOBs**



City + Tribal Grants

- **Grants for hazardous waste collection and education**
 - New Grant Coordinator!
- **Allocated \$1,105,786 for grants in 2026-2027**
- **Renewed emphasis on City+Tribal Workgroup**
 - Meetings scheduled for Mar. 19, Jun, 18 Sep. 17, and Dec. 10
 - Revisitation of grant program assessment



Emerging Items

- **2026 Legislative Session**
- **Facilities Needs Assessment**
- **SCRTS opening/Auburn Wastemobile Closure**
- **EPR for all HHW**
- **2026 Natural Yard Care Launch**
- **LightRecycle Washington Program Discontinued**



Program Information Sources

Website: kingcountyhazwasteWA.gov

Management Plan

Annual Work Plans

Annual Performance Reports

Quarterly Performance and Financial Reports

Public Newsletter (Quarterly)

Contact Information

Matthew Weintraub, Government Relations Manager
mweintraub@kingcounty.gov | 206-263-9591

Frances Bothfeld, Policy Analyst, Grants Coordinator
fbothfeld@kingcounty.gov | (206)775-5939

kingcountyhazwasteWA.gov | 206-296-4692

13. Member Comment

14. Adjourn