



# Metropolitan Solid Waste Advisory Committee Solid Waste Advisory Committee Joint Meeting – January 14, 2026



# 1. Housekeeping, Call to Order, and Introductions

Ali Blum

SWAC Chair Weiker

MSWAC Vice Chair Gire

## Agenda

### Metropolitan Solid Waste Advisory Committee (MSWAC) & Solid Waste Advisory Committee (SWAC) Joint Meeting

Wednesday, January 14, 2026 | 9:30 a.m. – noon

**In-person encouraged** at King Street Center (201 S Jackson St, Seattle, WA 98104)

**Online** (Teams Link)

TIME	TOPIC	PRESENTER
9:30	Arrival and Light Refreshments	
10:00	1. Housekeeping, Call to Order, and Introductions	Ali Blum SWAC Chair Weiker MSWAC Vice Chair Gire
10:05	2. Review Agenda	SWAC Chair Weiker MSWAC Vice Chair Gire
10:10	3. Review/Approve November Committee Minutes	SWAC Chair Weiker MSWAC Vice Chair Gire
10:15	4. Public Comment	
10:20	5. Updates: SWD, SWAC, MSWAC Other	Rebecca Singer SWAC Chair Weiker MSWAC Vice Chair Gire
10:30	6. Operations Update	Shawn Carter
10:40	7. Designated Recyclables List Presentation and Discussion	Hannah Scholes
11:15	8. Multi-Family Organics Management Plan Presentation and Discussion	Hannah Scholes
11:45	9. 2026 State Legislative Update	Amy Ockerlander
11:55	10. Member Comment	SWAC Chair Weiker MSWAC Vice Chair Gire
12:00	11. Adjourn	SWAC Chair Weiker MSWAC Vice Chair Gire

**Next MSWAC Meeting:** Wednesday, February 11

**Next SWAC Meeting:** Friday, February 13

**This notice will be provided in alternate formats upon request.**

Accommodations for people with disabilities will be provided when requested one week in advance of the meeting. Please call 206-477-5212; TTY Relay 711

## 2. Review Agenda SWAC Chair Weiker MSWAC Vice Chair Gire

# 3. Review/Approve November Committee Minutes

SWAC Chair Weiker

MSWAC Vice Chair Gire



**King County**

Department of Natural Resources and Parks  
Solid Waste Division

# 4. Public Comment

## 5. Updates: SWD, SWAC, MSWAC, Other

Rebecca Singer

SWAC Chair Weiker

MSWAC Vice Chair Gire



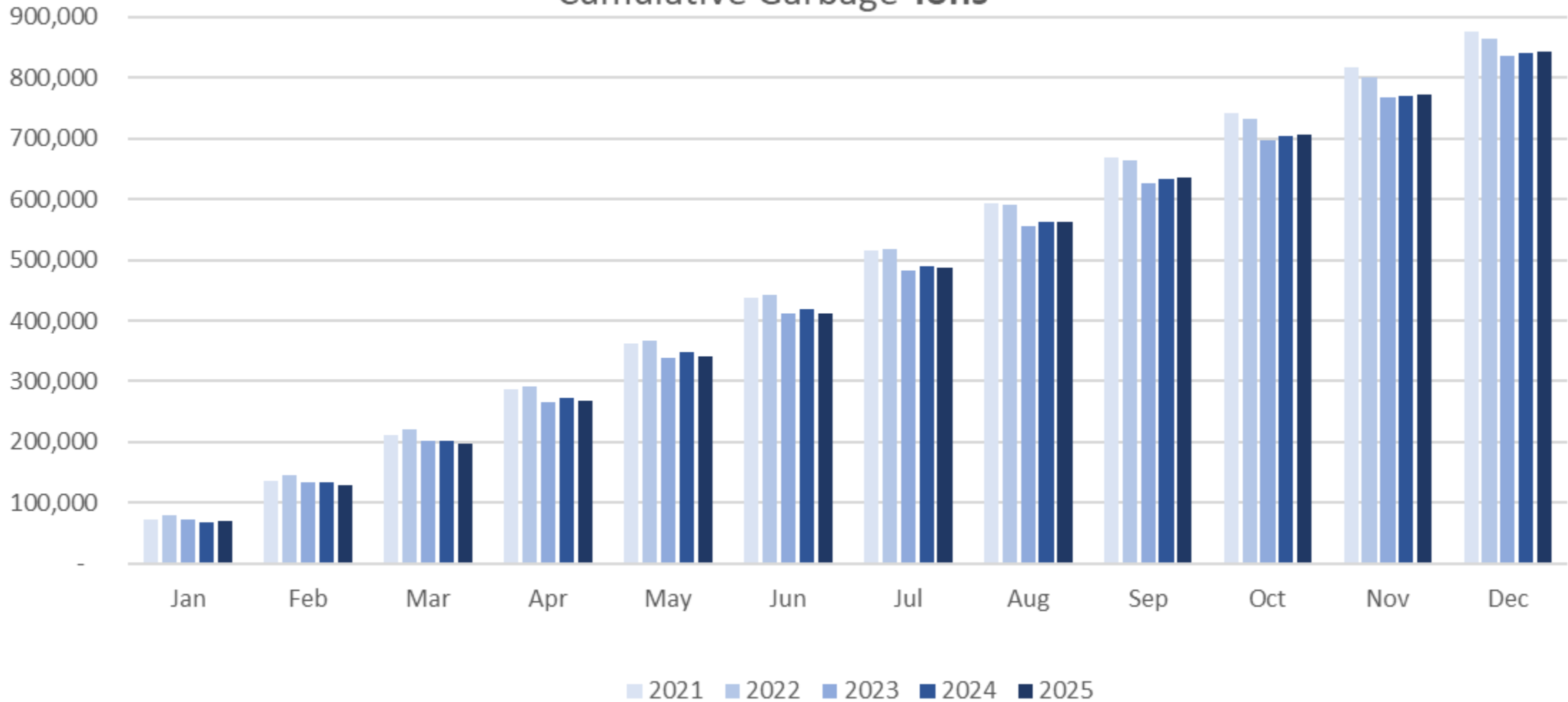
**King County**

Department of Natural Resources and Parks  
Solid Waste Division



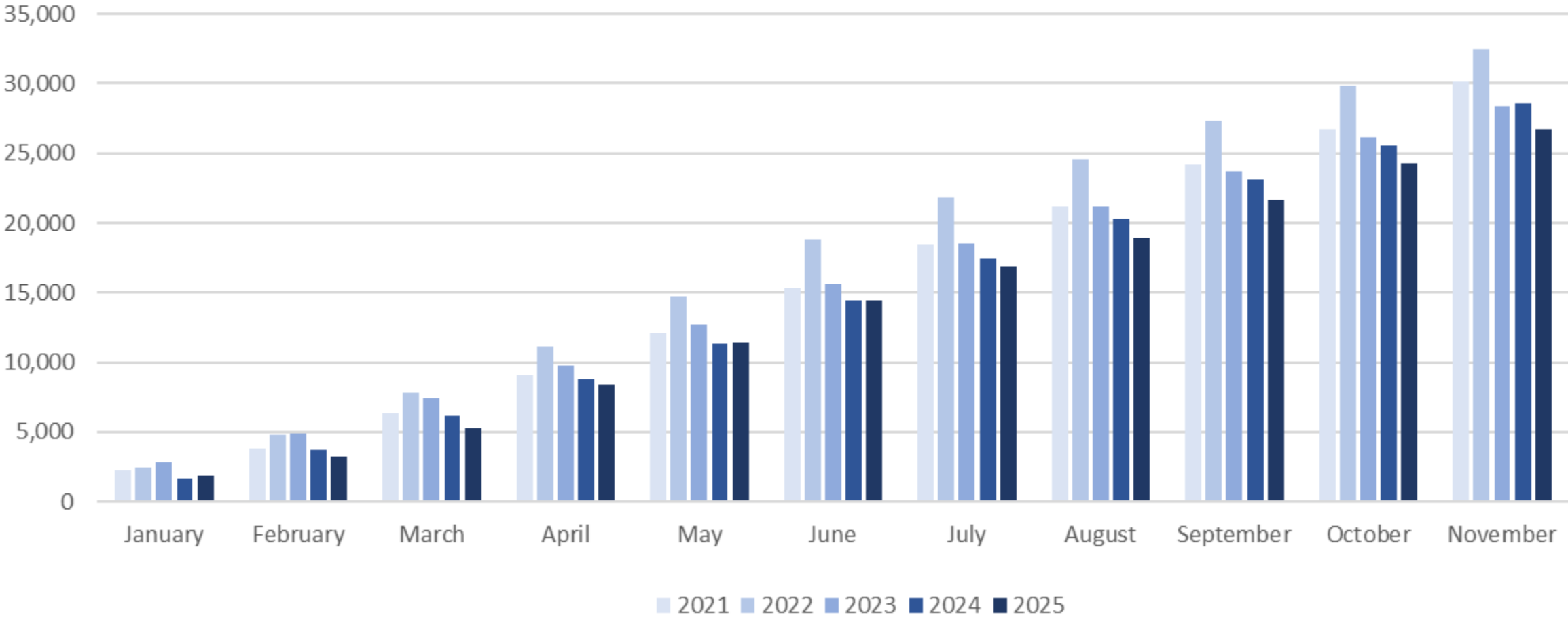
# Solid Waste Division Updates – January 2026

## Cumulative Garbage Tons



Cumulative garbage tonnage through December 2025 was slightly above tonnage from 2024.

# Cumulative Transfer Station Recycling Tons



Recycling tonnage collected and diverted at transfer stations is at 27k tons through November.

# December Flood Event

- King County has moved into the recovery phase after the Dec. 5-22 flood event.
- We've had successes in coordination and have more work to do as a region to be better prepared for future disaster debris events:
  - SWD convened a hauler forum and coordination meetings with city partners
  - SWD created a [Debris Management Resource Library](#) to help cities plan and implement debris collection opportunities
  - SWD mobilized free drop off at four transfer stations, the Skykomish Drop Box, and two sites in unincorporated King County.
  - Some cities organized collection events for their communities

# Upcoming Opportunities: Free Flood Debris Disposal

- Bow Lake, Shoreline, and Enumclaw Transfer Stations: Saturdays and Sundays through February 8
- Skykomish Drop Box: January 16-18, tentatively
- Drop-off event serving Snoqualmie Valley Farmers: TBD (January/February and March/April)



# Cedar Hills Renewable Gas to Energy (CHARGE) Facility Update



- King County Council approved legislation authorizing the Environmental Attribute Purchase and Sale Agreement Between King County and Karbone.
- The agreement was executed and will result in significant financial benefit for SWD and King County ratepayers.

# 2026 Solid Waste Rates

- The new 2026 Solid Waste Rates went into effect on January 1.
- SWD provided official notice to cities, haulers, and interested parties on September 30.
- Public outreach via digital engagement, signage, and flyers began in mid-October and is ongoing.

## KING COUNTY 2026 SOLID WASTE DISPOSAL FEE RATES

SOLID WASTE DISPOSAL FEE TYPE	KING COUNTY PER-TON FEE <sup>1</sup>	MODERATE RISK <sup>2</sup> WASTE SURCHARGE	WA STATE REFUSE TAX (3.6%)	TOTAL
<b>Minimum Fee <sup>3</sup></b>	\$36.39	\$2.23	\$1.32	\$40.25
Per-ton Fee (Self-Haul) Per-ton Fee (Contract)	\$229.29 \$179.18	\$5.84 \$5.84	\$8.25 \$6.45	\$243.38 \$191.47
<b>Charitable Organizations</b>				
Minimum Fee <sup>3</sup> Per-ton Fee	\$28.25 \$176.55	\$2.23 \$5.84	\$1.02 \$6.36	\$31.50 \$188.75
<b>Special Waste</b>				
Minimum Fee <sup>3</sup> Per-ton Fee Min. Extra Handling Charge Per-ton Extra Handling Charge	\$44.02 \$275.14 \$51.36 \$321.01	N/A N/A N/A N/A	\$1.58 \$9.91 \$1.85 \$11.56	\$45.60 \$285.05 \$53.21 \$332.57
Cedar Hills Regional Direct	\$194.89	N/A	N/A	\$194.89
<b>Yard Waste &amp; Clean Wood</b>				
Minimum Fee <sup>3</sup> Per-ton Fee	\$20.70 \$129.38	N/A N/A	N/A N/A	\$20.70 \$129.38
<b>Cleanup LIFT Discount</b>	\$20.00	N/A	N/A	\$20.00

<sup>1</sup> Solid waste contract collection companies pay only per-ton-fee at King County solid waste disposal facilities.

<sup>2</sup> The King County Board of Health has approved increases in the surcharge that funds hazardous waste programs.

<sup>3</sup> The standard minimum fee may be rounded to the nearest quarter per King County Code 10.12.03D.

# RRA Service Provider Registration due Jan. 31

- Recycling Reform Act service provider registration is due January 31, 2026
- SWD will be registering for our transfer station recycling collections and recycling collection events
- A public place where a government entity managed collection receptacles as of August 1, 2025, is also eligible, e.g., streets, sidewalks, plazas, city halls, libraries, public parks, bus stations, etc.
- Reimbursement starts in 2030
- More information and a registration link is available on [Ecology's website](#)

# New Resource: Climate-Friendly Recipes

- Public Health published a new illustrated cookbook featuring vegetarian and low meat recipes from people living in King County.
- SWD's Food Too Good to Waste program and the Re+ Zero Waste Action Guide are highlighted as food waste reduction resources.
- You can view the book [here](#) and feel free to share with your communities.

Public Health  
Seattle & King County



**A SHARED TABLE:  
DELICIOUS, CLIMATE-FRIENDLY  
RECIPES FROM KING COUNTY**



# 6. Operations Update

Shawn Carter

# Operations Update – January 2026



# November & December:

## Transfer Station Impact Assessment

### November

Zero impacts to commercial haulers

### December

Storm event began on 12/1 resulting in one day impact at Bow Lake

Minor disruptions to service at Houghton and Algona for public

# Current Construction: Transfer Station Impacts

- **Complete:** Vashon Tipping Floor Resurfacing Project
- **Underway:** Factoria Tipping Floor Repair and Resurfacing: Dec. 1 to mid-Feb.
  - Project on schedule
  - Monday-Friday: Open for commercial; closed for self-haul
  - Saturday-Sunday: Closed for commercial; open for self-haul
    - Exception 12/27 and 1/3 to allow for haulers to use the station for holiday make-up
  - Yard waste will be closed throughout the construction period
  - Household hazardous waste services will remain open normal hours

# 2026 Construction Projects: Look Ahead

- **Enumclaw Tipping Floor Resurfacing Project**
  - Anticipated timing: Late 1/2026-3/2026
  - Negligible impact anticipated; we anticipate top-loading for portion of project.
- **Bow Lake Compactor Rebuild**
  - Anticipated timing: 3/2026 - 5/2026
  - Negligible impact anticipated; we will run using one compactor, which we often do
- **Generator Tie Ins for Compactor Sites**
  - Anticipated timing: 3/2026 - 6/2026
  - No anticipated impact for haulers or the public
- **SCRTS Access Road via Broadway**
  - Anticipated timing: Q2
  - Impact TBD; potential congestion and wait times for haulers and public closure
- **Bow Lake South Processing Area**
  - Timing TBD; contract is currently out for bid
  - Impact TBD; impacts will likely be contained to recycling area

# Operations Updates: Staffing

- Hiring Transfer Station Operator to transition from Algona Transfer Station to the South County Recycling and Transfer Station (SCRTS)
- Hiring Truck Drivers to lessen reliance on overtime

# Questions?



# 7. Designated Recyclables List Presentation and Discussion

Hannah Scholes



**King County**

Department of Natural Resources and Parks  
Solid Waste Division

# King County Designated Recyclables List



 **King County**  
Department of Natural Resources and Parks

**Solid Waste Division**

waste prevention | resource recovery | waste disposal

# Designated Recyclables List (DRL)

## New Recycling Reform Act requirements RCW 70A.205.045

- (7) The waste reduction and recycling element shall include the following:
- (A) **Until January 1, 2030**, these programs shall include collection of source separated recyclable materials from single and multiple-family residences, in urban areas, unless the department approves an alternative program, according to the criteria in the planning guidelines...
  - (B) Except as provided in (b)(i)(C) of this subsection, **beginning January 1, 2030, these programs shall:**
    - (I) Provide curbside collection of source separated recyclable materials from single-family and multiple-family residences wherever curbside garbage collection services are provided to these entities;
    - (II) **Include materials on the statewide collection list designated for residential collection established by the department; and**
    - (III) **Include service standards for curbside collection frequency, container size, and method of collection, established under plans approved by the department under chapter 70A.208 RCW;**
  - (D) Comprehensive solid waste management plans may incorporate by reference programs described in an approved producer responsibility organization plan under chapter 70A.208 RCW to fulfill the requirements of this subsection (7)(b)(i) in whole or in part;

# Recycling Reform Act Timeline

## Statewide lists are coming!

- **2026** – ECY will send out a survey to understand what jurisdictions are currently collecting as part of the needs assessment
- **December 2026** – ECY publishes statewide lists
  - Comingled curbside collection
  - Separate curbside collection
  - Public space collection
  - Alternative collection
- **January 31, 2029** – ECY will provide the amendment template for local gov's. to adopt statewide lists

# Metal and Glass

(Will be part of RRA)

Material	Description	KC List	ECY List
Glass bottles & Jars		Yes	No
Aluminum & steel cans		Yes	Yes
Aluminum pressed foil	Foil, roasting trays, pie tins	No	No
Scrap metal		Yes	Yes
Aerosol containers	Steel or aluminum	Yes	No
Metal paint cans		No	No

# Paper

(will be part of RRA)

Material	Description	KC List	ECY List
Paper cans with metal lids	Coffee, nuts, baking powder	Yes	Yes
Corrugated cardboard	Not waxed	Yes	Yes
Kraft paper, magazines, glossy paper, newspaper, gift wrap, office paper etc.		Yes	Yes
Pizza boxes	Minimal grease	Yes	Yes
Paperboard packaging	Cereal, cracker boxes etc.	Yes	Yes
Cartons: aseptic and gable top	Plastic, paper, and aluminum layers in aseptic	Yes	No
Paper cups	Non-compostable	No	No
Polycoated paper and packaging	Freezer boxes, ice cream cartons, takeout food containers	Yes	No
Molded pulp packaging	Egg cartons	Yes	Yes

# Plastics

(will be part of RRA)

Material	Description	KC List	ECY List
Bottles, jugs, jars (#1 & #2)		Yes	Yes
Bottles, jugs, jars (#5)		Yes	No
Plastic caps (screw on)		Yes	Yes
Plastic tubs	Dairy containers etc.	Yes	Potentially
Plastic cups	Cold beverages	No	No
Plastic tubes	Toothpaste, sunscreen	No	No
Plastic buckets	HDPE 5-gallon buckets	Yes	Yes
PET thermoforms	Clamshells, clear berry containers	No	No
Blister packs	Variety of resins	No	No
Rigid plastic containers (#3-#7)		No	No
Plastic tub/container lids	Snap-on lids, take out beverage container lids	No	No
Multimaterial flexible packaging	Potato chip bags, coffee bags	No	No
Plastic bags and film	Bread bags, dry cleaning and other stretchy film plastics typically accepted at grocery stores.	No	Potentially

# Non-RRA materials

These materials will not be included in UTC service levels

Material	Description	KC List	ECY List
Bulky rigid plastics	Laundry baskets, lawn furniture	No	No
Batteries	Lead acid, button, dry cell (alkaline/carbon), NiCad/NiMH/Lithium	No	Potentially
Motor oil		No	Potentially
Cooking oil		No	Potentially

# Questions?



# 8. Multi-Family Organics Management Plan Presentation and Discussion

Hannah Scholes



# Multifamily Organics Service Planning

*Fulfilling requirements from OML 3.0 in KC Comprehensive SWM Plan*



**King County**

Department of Natural Resources and Parks

**Solid Waste Division**

waste  
prevention

resource  
recovery

waste  
disposal

# HB 1497 – OML 3.0 - RCW 70A.205.540

## Requires Multifamily Organics Plan

(5)(a) Jurisdictions planning together or independently that submit a preliminary draft solid waste management plan to the department under RCW 70A.205.040 and 70A.205.055 (1) after July 1, must include programs and establish a timeline to implement a phase-in to require collection of source-separated organic materials from multifamily residences in areas subject to the organic materials management requirements of subsections (1) and (3) of this section. The programs and phase-in established under this subsection must include required collection of source-separated organic materials from all newly constructed or substantially remodeled multifamily residential buildings certified for occupancy after the local solid waste plan update takes effect.

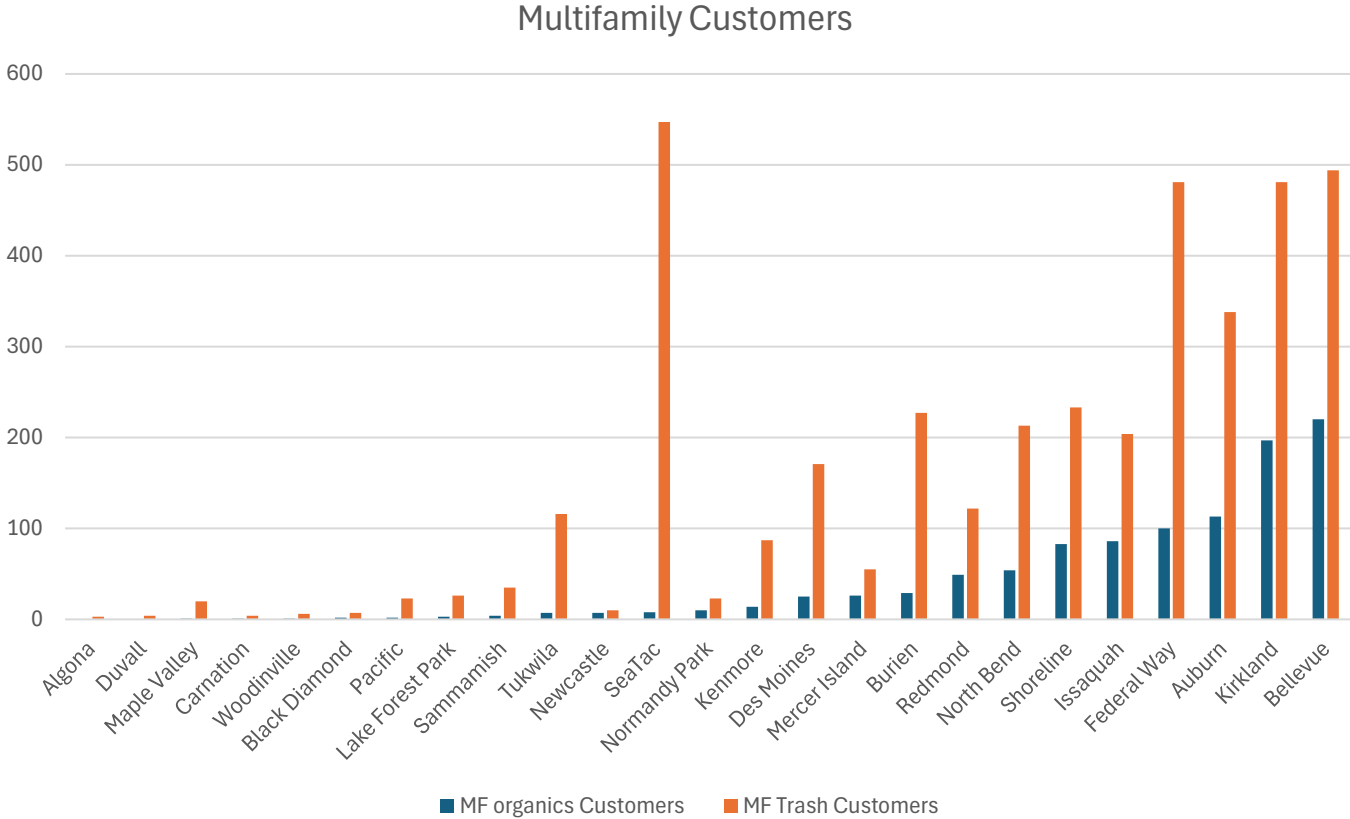
(b) Programs established under this subsection may allow for waivers from the requirements for source-separated organic materials for an existing multifamily structure if it is determined that the structure does not have adequate storage space for collection of source-separated organic materials. In cases where space constraints are determined to exist, the feasibility of shared containers by contiguous multifamily structures or between multifamily structures and adjacent businesses shall also be evaluated before a waiver is granted.

(c) For purposes of this subsection, "substantially remodeled" means a remodeled building for which the total cost exceeds one-half of the assessed value of the building for property tax purposes at the time the contract for the remodel work was made.

***Program & timeline for required organics collection for new construction in ORCA areas***

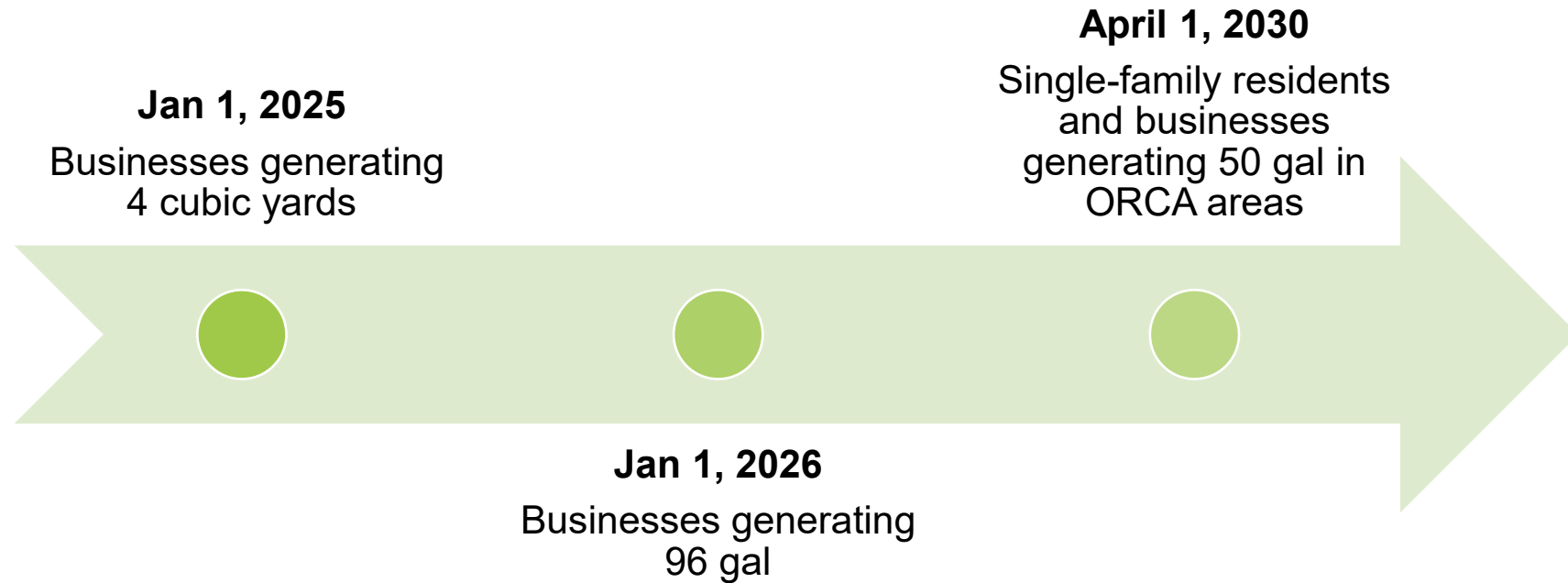
# Current Multifamily Organics Programs

- 8/37 Cities in KC offer embedded or subsidized compost cart service for multifamily properties
  - Programs typically include technical assistance and free tools such as signage, countertop containers, and/or biobags for residents



# Timeline for other organics service requirements

## Single family and businesses



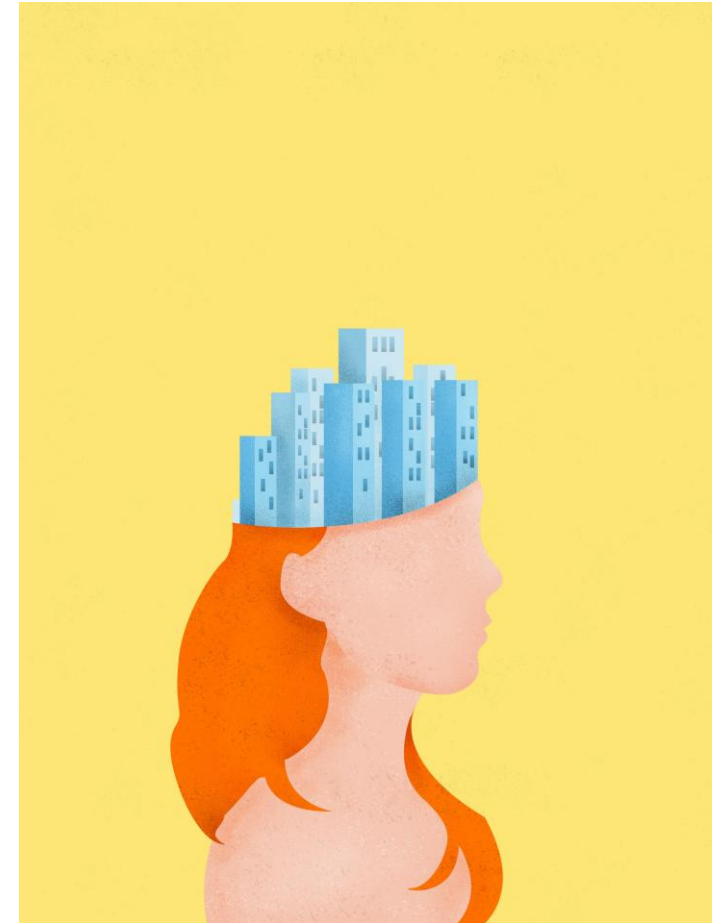
# Proposed Programs & Timeline for King County

## Multifamily Organics Service

**Multifamily service requirements will go into effect between 2030 and 2040 across King County**

Building up to the service requirement, we will consider and incorporate program elements such as:

- Code and contract updates: Building code space requirements, service level code/contract updates
- Sequencing/prioritization of properties – new construction, ORCA areas, higher generators, etc.
- Development of a waiver process and options for alternative collection (dehydrators, self-haul, shared service)
- Development of a contamination reduction strategy
- Alignment with regional outreach
- Inclusive and equitable outreach and implementation - language/culture/income etc.



# Timeline Rational

Multifamily service requirements will go into effect between 2030 and 2040 across King County

- 10-year window allows for flexibility in varying city circumstances
- After single-family and business requirements go into effect, allows for staff time to focus on multifamily sector
- Takes advantage of the culture shift following single-family and business requirements
- Allows time for lengthy code-update and contract renegotiation processes
- Allows time to prioritize budget for staffing and other program needs



# Reactions?



# 9. 2026 State Legislative Update

Amy Ockerlander



# 2026 Legislative Update

# 2026 Session Cutoff Calendar

	Date	Day of Week	Day of Session			
January	12	M	1	← First day of session.		
	13	T	2			
	14	W	3			
	15	Th	4			
	16	F	5			
	17	S	6			
	18	Su	7			
	19	M	8			
	20	T	9			
	21	W	10			
	22	Th	11			
	23	F	12			
	24	S	13			
	25	Su	14			
	26	M	15			
	27	T	16			
	28	W	17			
	29	Th	18			
	30	F	19			
	31	S	20			
	February	1	Su		21	← Policy Committee Cutoff. Last day to read in committee reports in house of origin, except House fiscal committees and Senate Ways & Means and Transportation committees.
		2	M		22	
		3	T		23	
		4	W		24	
		5	Th		25	
		6	F		26	
		7	S		27	
		8	Su		28	
		9	M		29	
		10	T		30	
		11	W		31	
12		Th	32			
13		F	33			
14		S	34			
15		Su	35			
16		M	36			
17		T	37			
18		W	38			
19		Th	39			
20		F	40			
21		S	41			
22		Su	42			
23		M	43			
24		T	44			
25		W	45			
26		Th	46			
27		F	47			
28		S	48			
March	1	Su	49	← House of Origin Cutoff. Last day to consider bills in house of origin (5 p.m.).		
	2	M	50			
	3	T	51			
	4	W	52			
	5	Th	53			
	6	F	54			
	7	S	55			
	8	Su	56			
	9	M	57			
	10	T	58			
	11	W	59			
	12	Th	60			
				← Policy Committee Cutoff - Opposite House. Last day to read in committee reports from opposite house, except House fiscal committees and Senate Ways & Means and Transportation committees.		
				← Fiscal Committee Cutoff - Opposite House. Last day to read in opposite house committee reports from House fiscal committees and Senate Ways & Means and Transportation committees.		
				← Opposite House Cutoff. Until 5 p.m., last day to consider opposite house bills with the exception of budgets, matters necessary to implement budgets, matters that affect state revenue, initiatives to the legislature and alternatives, differences between the two houses, and business related to the interim or closing the session.		
				← Sine Die. Last day allowed for regular session under state constitution.		

# 2026 Legislative Session

## Short Session (60 days)

# 2026 Legislative Session

## Short Session (60 days)

- **Began January 12**
- **Cutoffs will come fast!**
  - House of Origin Policy: **February 4**
  - House of Origin Fiscal Policy: **February 9**
  - House of Origin: **February 17**
  - Opposite House Policy: **February 25**
  - Opposite House Fiscal: **March 2**
  - Opposite House: **March 6**
  - Sine Die: **March 12**

# 2026 Legislative Session

## Short Session (60 days)

### Challenges abound:

- **\$2.3B Shortfall**
- **Loss of Federal Funding**
- **Economic Slowdown**
- **Disaster Recovery**

# Solid waste related bills expected in 2026

*To be confirmed*

- Extended Producer Responsibility (EPR) for Textiles (*building on HB 1420*)
- EPR for Household Hazardous Waste (HHW) – incl. Vapes
- Improving the End-of-Life Management of Electric Vehicle Batteries (*building on HB 1550 / SB 5586*)
- Increasing Solid Waste Collection Tax (*building on HB 2018*)
- Deposit-Return System (DRS) for Beverage Containers (*HB 1607*)
- Extended Producer Responsibility (EPR) for Mattresses (*building on HB 1901*)
- Extended Producer Responsibility (EPR) for Sharps (*building on Safe Sharps Advisory Group*)
- Amending the Single-Use Plastic Bag Ban (*HB 2233*)
- **NEW:** Post Consumer Recycled Content Requirements (*HB 2271*)

# Questions?



# 10. Member Comment

# 11. Adjourn