

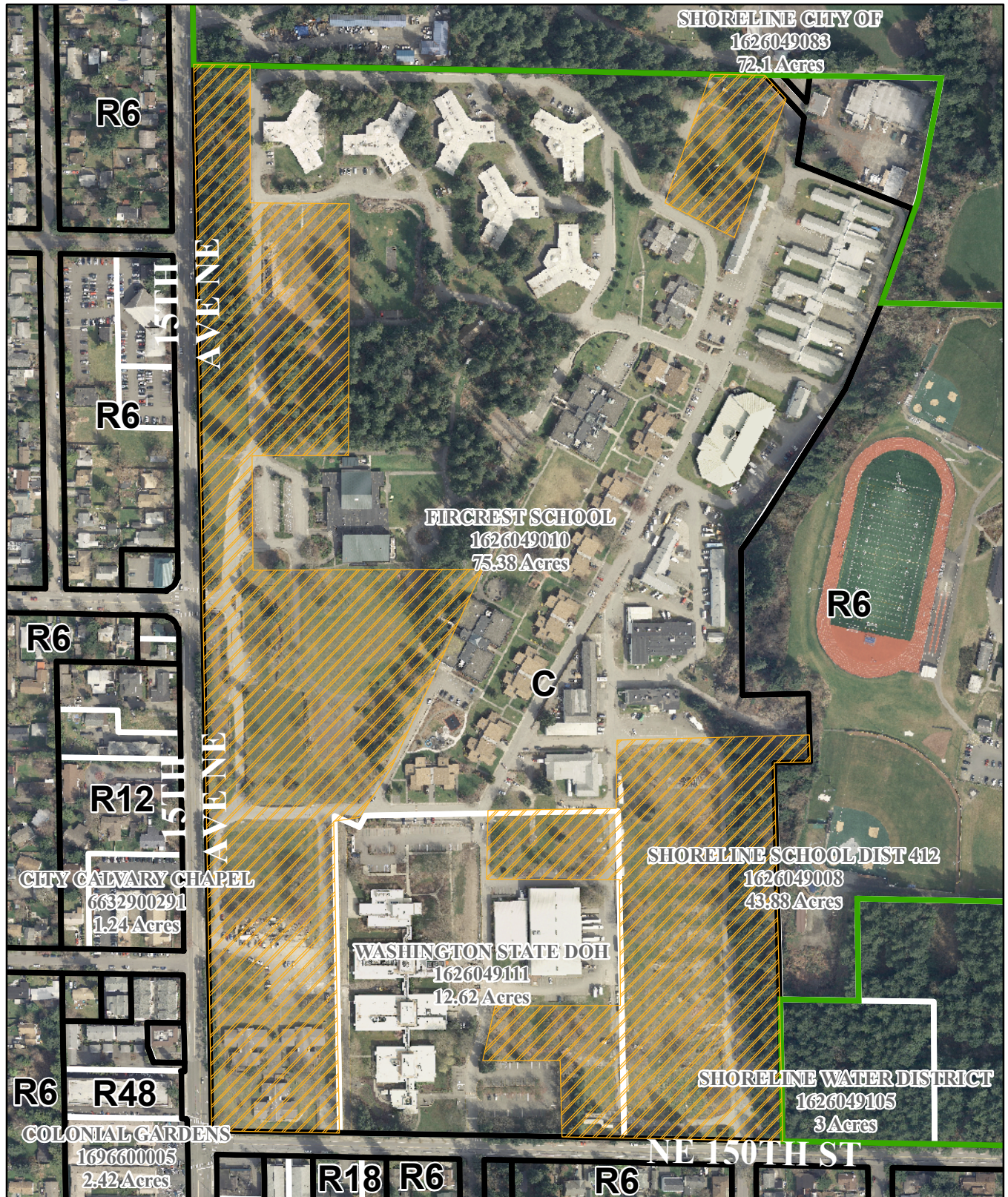


# Fircrest Surplus Property



Shows zoning updates through September, 17, 2010.  
Aerial Photography acquired March, 2009.

0 155 310 620 930 1,240 Feet



Click "Business" at [shorelinewa.gov](http://shorelinewa.gov) for downloadable maps and demographics

Dan Eernisse, Economic Development Manager [deernisse@shorelinewa.gov](mailto:deernisse@shorelinewa.gov) O: 206.801.2218 M: 206.391.8473